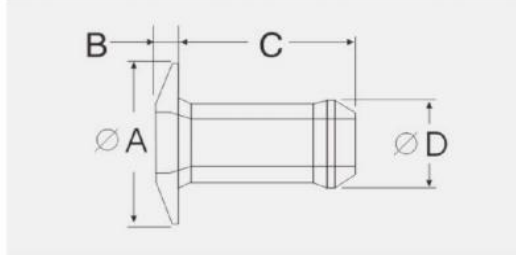




Speed Blind Rivets

Manufacturer: RivetFast



Materials

Body	Aluminum Alloy
Body	Stainless Steel
Body	Steel

Φ	MIN. MAX.		MIN. MAX.		A	B	C	D	KN	KN	Part No/ref
	NOM.				±0.4	MAX.	MAX.	MAX.			
3.2(1/8")	0.64	1.91	3.26	3.34	6.2	0.99	3.86	3.14	0.7	1.3	AL01-0403
3.2(1/8")	1.14	2.42	3.26	3.34	6.2	0.99	4.37	3.14	0.7	1.3	AL01-0404
3.2(1/8")	1.65	2.87	3.26	3.34	6.2	0.99	4.87	3.14	0.7	1.3	AL01-0405
3.2(1/8")	2.15	3.43	3.26	3.34	6.2	0.99	5.39	3.14	0.7	1.3	AL01-0406
3.2(1/8")	3.17	4.45	3.26	3.34	6.2	0.99	6.41	3.14	0.7	1.3	AL01-0408
3.2(1/8")	4.19	5.47	3.26	3.34	6.2	0.99	7.42	3.14	0.7	1.3	AL01-0410
3.2(1/8")	5.20	6.48	3.26	3.34	6.2	0.99	8.44	3.14	0.7	1.3	AL01-0412
3.2(1/8")	6.22	7.50	3.26	3.34	6.2	0.99	9.45	3.14	0.7	1.3	AL01-0414
3.2(1/8")	7.24	8.51	3.26	3.34	6.2	0.99	10.46	3.14	0.7	1.3	AL01-0416
4(5/32")	1.57	2.93	3.97	4.04	7.9	0.99	4.91	3.88	1.1	1.7	AL01-0505
4(5/32")	2.15	3.43	3.97	4.04	7.9	0.99	5.41	3.88	1.1	1.7	AL01-0506
4(5/32")	2.66	3.94	3.97	4.04	7.9	0.99	5.92	3.88	1.1	1.7	AL01-0507
4(5/32")	3.68	4.96	3.97	4.04	7.9	0.99	6.94	3.88	1.1	1.7	AL01-0509
4(5/32")	4.69	5.97	3.97	4.04	7.9	0.99	7.95	3.88	1.1	1.7	AL01-0511
4(5/32")	5.71	6.99	3.97	4.04	7.9	0.99	8.97	3.88	1.1	1.7	AL01-0513
4(5/32")	6.73	8.00	3.97	4.04	7.9	0.99	9.98	3.88	1.1	1.7	AL01-0515
4(5/32")	7.75	9.02	3.97	4.04	7.9	0.99	11.00	3.88	1.1	1.7	AL01-0517