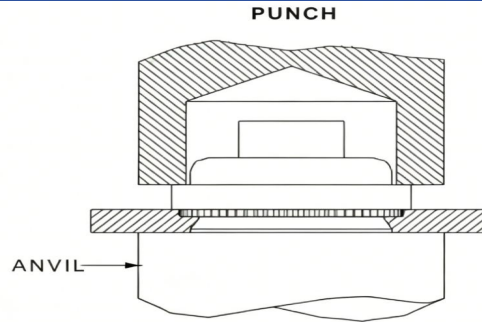
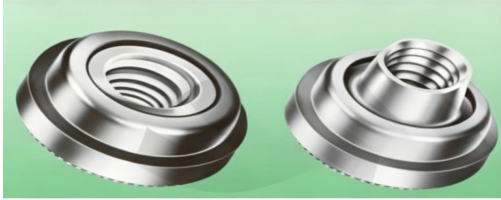




Floating Self-Clinching Nuts

Manufacturer: RivetFast

AS M4 10 ZC



INSTALLATION

Units: inches

	Thread Size	Type				Thread Code	Shank Code	A Shank Max.	Min. Sheet Thickness	Mounting Hole Diameter+0.003-0.000	C Max.	D Max.	E ±0.15	T Max.	T Max.	Minimum Edge Distance
		Non-locking fastener materials		Self-locking fastener materials												
		Steel	Stainless Steel	Steel	Stainless Steel											
Unified Thread	.122-40 (#4-40)	AS	AC	LAS	LAC	440	1	0.038	0.040	0.290	0.289	0.290	0.36	0.13	0.19	0.30
	.122-40 (#4-40)	AS	AC	LAS	LAC	440	2	0.054	0.056	0.290	0.289	0.290	0.36	0.13	0.19	0.30
	.138-32 (#6-32)	AS	AC	LAS	LAC	632	1	0.038	0.040	0.328	0.327	0.335	0.39	0.13	0.20	0.32
	.138-32 (#6-32)	AS	AC	LAS	LAC	632	2	0.054	0.056	0.328	0.327	0.335	0.39	0.13	0.20	0.32
	.164-32 (#8-32)	AS	AC	LAS	LAC	862	1	0.038	0.040	0.368	0.367	0.365	0.44	0.13	0.21	0.34
	.164-32 (#8-32)	AS	AC	LAS	LAC	862	2	0.054	0.056	0.368	0.367	0.365	0.44	0.13	0.21	0.34
	.190-24 (#10-24)	AS	AC	LAS	LAC	024	1	0.038	0.040	0.406	0.405	0.405	0.47	0.17	0.27	0.36
	.190-24 (#10-24)	AS	AC	LAS	LAC	024	2	0.054	0.056	0.406	0.405	0.405	0.47	0.17	0.27	0.36
	.190-32 (#10-32)	AS	AC	LAS	LAC	032	1	0.038	0.040	0.406	0.405	0.405	0.47	0.17	0.27	0.36
	.190-32 (#10-32)	AS	AC	LAS	LAC	032	2	0.054	0.056	0.406	0.405	0.405	0.47	0.17	0.27	0.36
	.250-20 (1/4-20)	AS	AC	LAS	LAC	0420	2	0.054	0.056	0.515	0.514	0.510	0.60	0.21	0.31	0.42
	.250-28 (1/4-28)	AS	AC	LAS	LAC	0428	2	0.054	0.056	0.515	0.514	0.510	0.60	0.21	0.31	0.42

Units: mm

	Thread Size	Type				Thread Code	Shank Code	A Shank Max.	Min. Sheet Thickness	Mounting Hole Diameter+0.08	C Max.	D Max.	E ±0.15	T Max.	T Max.	Minimum Edge Distance
		Non-locking fastener materials		Self-locking fastener materials												
		Steel	Stainless Steel	Steel	Stainless Steel											
Metric Thread	M3X0.5	AS	AC	LAS	LAC	M3	1	0.97	1	7.37	7.35	7.37	9.14	3.31	4.83	7.62
	M3X0.5	AS	AC	LAS	LAC	M3	2	1.38	1.4	7.37	7.35	7.37	9.14	3.31	4.83	7.62
	M4X0.7	AS	AC	LAS	LAC	M4	1	0.97	1	9.35	9.33	9.28	11.18	3.31	5.34	8.64
	M4X0.7	AS	AC	LAS	LAC	M4	2	1.38	1.4	9.35	9.33	9.28	11.18	3.31	5.34	8.64
	M5X0.8	AS	AC	LAS	LAC	M5	1	0.97	1	10.31	10.29	10.29	11.94	4.32	6.86	9.14
	M5X0.8	AS	AC	LAS	LAC	M5	2	1.38	1.4	10.31	10.29	10.29	11.94	4.32	6.86	9.14
	M6X1	AS	AC	LAS	LAC	M6	2	1.38	1.4	13.08	13.06	12.96	15.24	5.34	7.88	10.67